



# Inland Counties Emergency Medical Agency

1425 South D Street, San Bernardino, CA 92415-0060 ■ (909) 388-5823 ■ Fax (909) 388-5825 ■ www.icema.net

*Serving San Bernardino, Inyo, and Mono Counties*  
*Tom Lynch, EMS Administrator*  
*Reza Vaezazizi, MD, Medical Director*

**DATE:** September 10, 2020

**TO:** Hospital CEOs, ED Directors/Managers and PLNs - San Bernardino County

**FROM:** Tom Lynch  
EMS Administrator

**SUBJECT: HOSPITAL BED DELAY REPORT FOR JANUARY - AUGUST 2020**

The Inland Counties EMS Agency (ICEMA) is providing the January through August 2020 hospital ambulance patient offload delay (APOD) report utilizing data retrieved from the ambulance provider computer aided dispatch records.

The APOD report provides the total number of:

- 9-1-1 transports to each hospital.
- Transports that resulted in APOD.
- APOD hours/minutes calculated beginning 25 minutes after the ambulance arrives at the hospital.

If you have any questions, please contact Mark Roberts, Technical Consultant, at (909) 388-5804 or via e-mail at [mark.roberts@cao.sbcounty.gov](mailto:mark.roberts@cao.sbcounty.gov).

TL/MR/jlm

c: Keven Porter, Regional Vice President, HASC  
File Copy

## BOARD OF DIRECTORS

Robert A. Lovingood  
First District

Janice Rutherford  
Second District

Dawn Rowe  
Third District

Curt Hagman  
Chairman  
Fourth District

Josie Gonzales  
Vice Chair  
Fifth District

Gary McBride  
Chief Executive Officer

# Inland Counties Emergency Medical Agency



## *Bed Delay Report*

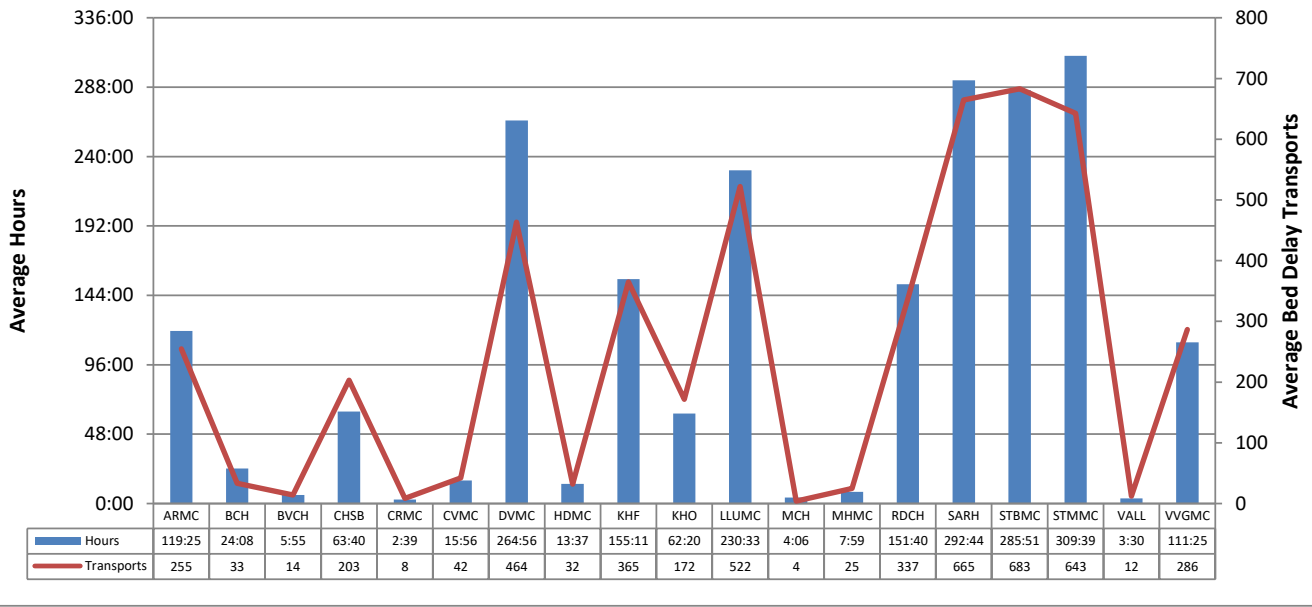
*January 2020 – August 2020*

## Report Detail

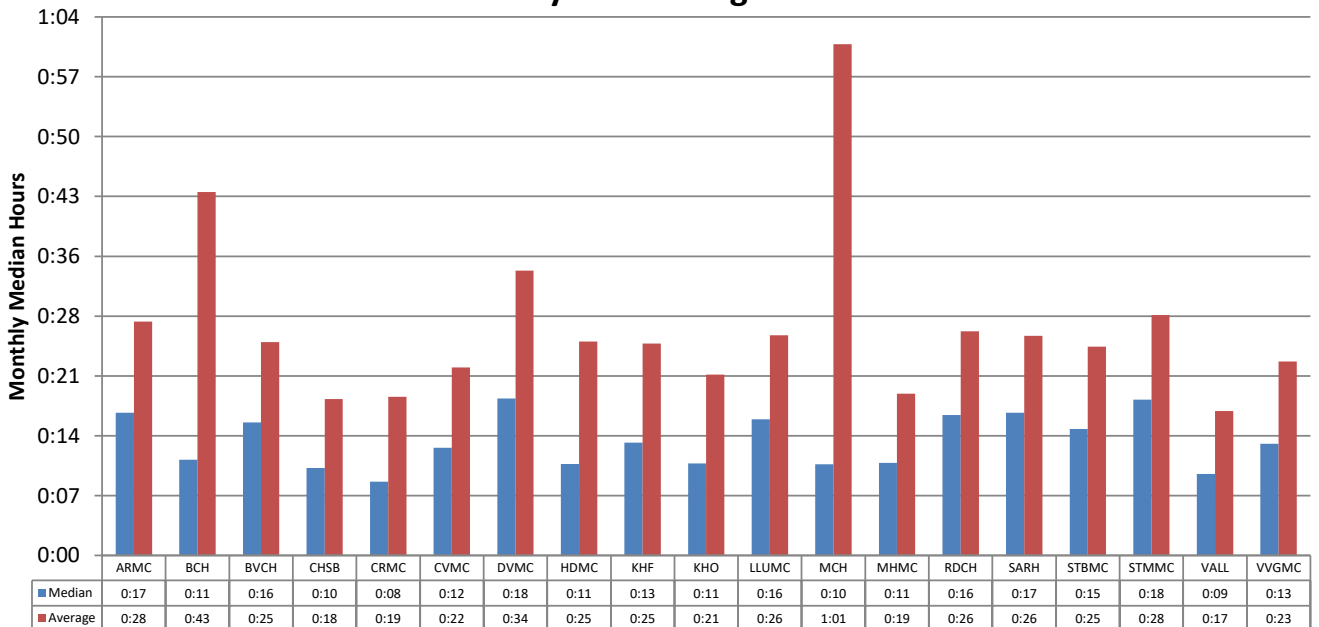
This report collects and summarizes the "Bed Delay" for a selected group of hospitals. "Bed Delay" is the time between arrival of an ambulance at a hospital and the ambulance going back in service. The first 25 minutes are excluded from consideration. The only type of transports that are considered are 911 calls where the patient is treated and transported via ambulance.

Abbreviated Name	Full Name
ARMC	Arrowhead Regional Medical Center
BCH	Barstow Community Hospital
BVCH	Bear Valley Community Hospital
CHSB	Community Hospital San Bernardino
CRMC	Colorado River Medical Center
CVMC	Chino Valley Medical Center
DVMC	Desert Valley Hospital Center
HDMC	Hi-Desert Medical Center
KHF	Kaiser Hospital Medical Center - Fontana
KHO	Kaiser Hospital Medical Center - Ontario
LLUMC	Loma Linda University Medical Center
MCH	Mountains Community Hospital
MHMC	Montclair Hospital Medical Center
RDCH	Redlands Community Hospital
SARH	San Antonio Regional Hospital
STBMC	St. Bernardine Medical Center
STMMC	St. Mary Medical Center
VALL	JLP VA Loma Linda
VVGMC	Victor Valley Global Medical Center

### Bed Delay Hours\* and Bed Delay Transports Average per Hospital by Month January 2020 – August 2020



### Time Bed Delay Patients Were on Bed Delay per Patient Median and Average by Hospital January 2020 – August 2020



\*Note: Bed Delay Hours excludes the first 25 minutes of each transport. ICEMA uses the Signature Locked time as indicated by the paramedic and/or the Computer Aided Dispatch (CAD).

## Total Bed Delay Hours\* and Bed Delay Transports by Hospital January 2020 – August 2020

Hospital	Total Bed Delay Hours*	Bed Delay Transports	Total Transports	Bed Delay Percentage	Average Bed Delay by Patient	Median Bed Delay by Patient
ARMC	955:21	2,036	6,468	31.5%	0:28	0:17
BCH	193:09	265	3,373	7.9%	0:43	0:11
BVCH	47:27	111	1,111	10.0%	0:25	0:16
CHSB	509:27	1,626	4,461	36.4%	0:18	0:10
CRMC	21:18	67	561	11.9%	0:19	0:08
CVMC	127:30	338	2,780	12.2%	0:22	0:12
DVMC	2119:28	3,709	6,731	55.1%	0:34	0:18
HDMC	108:55	254	3,505	7.2%	0:25	0:11
KHF	1241:34	2,920	8,762	33.3%	0:25	0:13
KHO	498:43	1,375	4,745	29.0%	0:21	0:11
LLUMC	1844:26	4,177	8,615	48.5%	0:26	0:16
MCH	32:48	32	505	6.3%	1:01	0:10
MHMC	63:54	197	1,770	11.1%	0:19	0:11
RDCH	1213:26	2,698	5,839	46.2%	0:26	0:16
SARH	2341:56	5,316	10,767	49.4%	0:26	0:17
STBMC	2286:54	5,464	9,425	58.0%	0:25	0:15
STMMC	2477:12	5,141	8,186	62.8%	0:28	0:18
VALL	28:05	97	720	13.5%	0:17	0:09
VVGMC	891:22	2,291	5,566	41.2%	0:23	0:13
<b>Total</b>	<b>17003:04</b>	<b>38,114</b>	<b>93,890</b>	<b>40.6%</b>	<b>0:26</b>	<b>0:15</b>

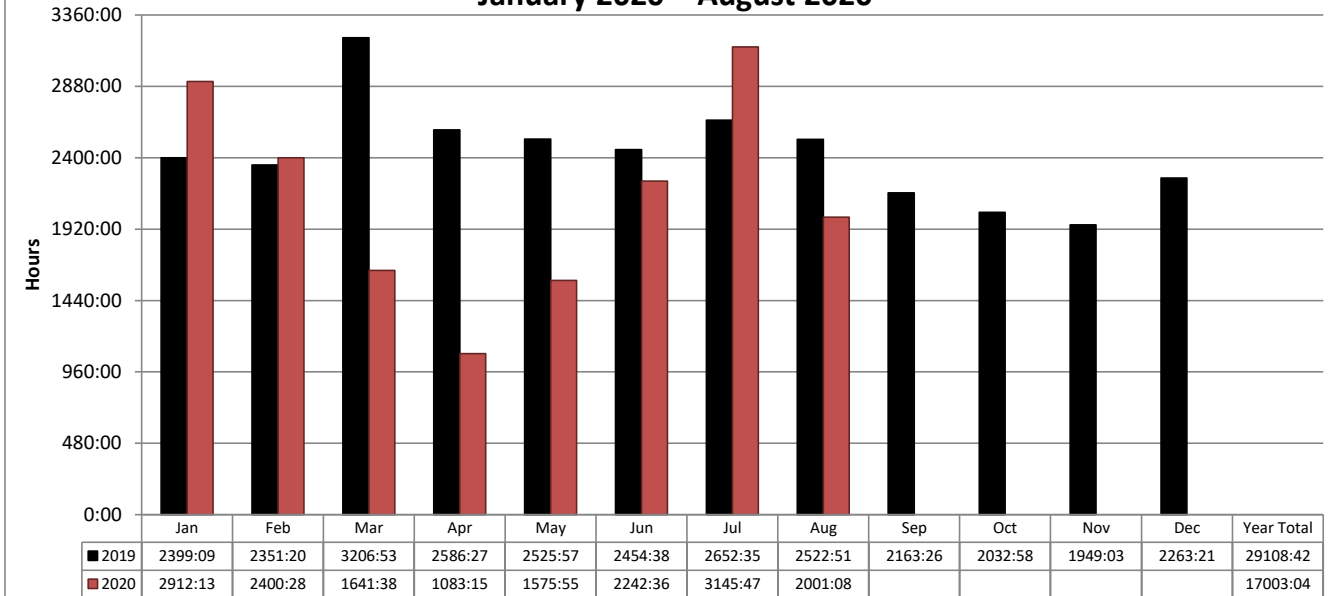
\*Note: Bed Delay Hours excludes the first 25 minutes of each transport. ICEMA uses the Signature Locked time as indicated by the paramedic and/or the Computer Aided Dispatch (CAD).

**Total Monthly Bed Delay Hours\* by Hospital  
January 2020 – August 2020**

Hospital	Jan	Feb	Mar	Apr	May	Jun	Jul	Aug	Sep	Oct	Nov	Dec	Total	Average Bed Delay by Month
ARMC	180:21	78:35	118:51	39:43	53:25	163:56	226:02	94:24					955:21	119:25
BCH	18:20	37:07	30:45	13:06	14:48	48:27	18:01	12:32					193:09	24:08
BVCH	12:19	6:16	2:28	0:10	6:22	1:36	6:24	11:48					47:27	5:55
CHSB	74:56	59:53	64:07	39:07	26:10	68:01	117:12	59:58					509:27	63:40
CRMC	1:19	3:55	2:12	0:51	3:54	2:09	3:01	3:51					21:18	2:39
CVMC	15:31	20:41	13:17	12:02	7:07	9:36	38:18	10:54					127:30	15:56
DVMC	373:00	297:23	200:47	89:55	131:31	283:04	459:59	283:46					2119:28	264:56
HDMC	26:03	20:45	13:34	5:17	20:55	7:20	8:24	6:34					108:55	13:37
KHF	269:19	219:20	120:29	59:28	62:58	147:41	216:01	146:14					1241:34	155:11
KHO	82:08	63:28	34:36	23:16	40:02	81:58	89:43	83:29					498:43	62:20
LLUMC	337:48	338:01	230:22	70:33	138:40	278:47	277:09	173:02					1844:26	230:33
MCH	0:16	0:05	0:19	0:26	10:58	0:57	16:51	2:51					32:48	4:06
MHMC	9:26	5:51	6:49	5:20	9:57	8:31	13:50	4:07					63:54	7:59
RDCH	167:23	107:49	117:26	51:08	108:13	191:42	317:53	151:48					1213:26	151:40
SARH	462:25	357:07	174:34	261:20	307:43	316:33	276:48	185:25					2341:56	292:44
STBMC	372:43	333:30	225:42	222:08	269:44	238:26	376:14	248:24					2286:54	285:51
STMMC	359:01	306:37	194:59	139:23	278:34	313:04	468:12	417:18					2477:12	309:39
VALL	8:08	3:06	1:55	2:11	0:59	5:48	4:16	1:38					28:05	3:30
VVGMC	141:35	140:49	88:19	47:42	83:46	74:51	211:20	102:56					891:22	111:25
<b>Total</b>	<b>2912:13</b>	<b>2400:28</b>	<b>1641:38</b>	<b>1083:15</b>	<b>1575:55</b>	<b>2242:36</b>	<b>3145:47</b>	<b>2001:08</b>					<b>17003:04</b>	<b>2125:23</b>

\*Note: Bed Delay Hours excludes the first 25 minutes of each transport. ICEMA uses the Signature Locked time as indicated by the paramedic and/or the Computer Aided Dispatch (CAD).

**San Bernardino County  
Total Bed Delay Hours\* by Month  
January 2020 – August 2020**



**Total Bed Delay Hours\* and Bed Delay Transports by Hospital  
January 2020 – August 2020**

Hospital	2019				2020 YTD			
	Total BD Hours*	BD Transports	Total Transports	BD %	Total BD Hours*	BD Transports	Total Transports	BD %
ARMC	1905	3,815	11,434	33.4%	955	2,036	6,468	31.5%
BCH	239	442	5,464	8.1%	193	265	3,373	7.9%
BVCH	48	119	1,885	6.3%	47	111	1,111	10.0%
CHSB	1031	2,963	7,290	40.6%	509	1,626	4,461	36.4%
CRMC	68	126	827	15.2%	21	67	561	11.9%
CVMC	209	619	4,777	13.0%	127	338	2,780	12.2%
DVMC	3287	6,165	11,355	54.3%	2119	3,709	6,731	55.1%
HDMC	173	421	5,648	7.5%	108	254	3,505	7.2%
KHF	2585	5,051	13,755	36.7%	1241	2,920	8,762	33.3%
KHO	1174	2,649	7,755	34.2%	498	1,375	4,745	29.0%
LLUMC	3291	7,122	14,010	50.8%	1844	4,177	8,615	48.5%
MCH	21	37	908	4.1%	32	32	505	6.3%
MHMC	48	208	2,441	8.5%	63	197	1,770	11.1%
RDCH	2103	4,610	9,194	50.1%	1213	2,698	5,839	46.2%
SARH	4250	7,981	17,381	45.9%	2341	5,316	10,767	49.4%
STBMC	3829	8,306	14,365	57.8%	2286	5,464	9,425	58.0%
STMMC	3460	7,471	12,737	58.7%	2477	5,141	8,186	62.8%
VALL	43	143	1,112	12.9%	28	97	720	13.5%
VVGMC	1335	3,781	8,223	46.0%	891	2,291	5,566	41.2%
<b>Total</b>	<b>29108</b>	<b>62,029</b>	<b>150,561</b>	<b>41.2%</b>	<b>17003</b>	<b>38,114</b>	<b>93,890</b>	<b>40.6%</b>

\*Note: Bed Delay Hours excludes the first 25 minutes of each transport. ICEMA uses the Signature Locked time as indicated by the paramedic and/or the Computer Aided Dispatch (CAD).