



Inland Counties Emergency Medical Agency

1425 South D Street, San Bernardino, CA 92415-0060 ■ (909) 388-5823 ■ Fax (909) 388-5825 ■ www.icema.net

Serving San Bernardino, Inyo, and Mono Counties
Tom Lynch, EMS Administrator
Reza Vaezazizi, MD, Medical Director

DATE: July 9, 2020

TO: Hospital CEOs, ED Directors/Managers and PLNs - San Bernardino County

FROM: Tom Lynch
EMS Administrator

SUBJECT: HOSPITAL BED DELAY REPORT FOR JANUARY - MAY 2020

The Inland Counties EMS Agency (ICEMA) is providing the January through May 2020 hospital ambulance patient offload delay (APOD) report utilizing data retrieved from the ambulance provider computer aided dispatch records.

The APOD report provides the total number of:

- 9-1-1 transports to each hospital.
- Transports that resulted in APOD.
- APOD hours/minutes calculated beginning 25 minutes after the ambulance arrives at the hospital.

If you have any questions, please contact Mark Roberts, Technical Consultant, at (909) 388-5804 or via e-mail at mark.roberts@cao.sbcounty.gov.

TL/MR/jlm

c: Keven Porter, Regional Vice President, HASC
File Copy

BOARD OF DIRECTORS

Robert A. Lovingood
First District

Janice Rutherford
Second District

Dawn Rowe
Third District

Curt Hagman
Chairman
Fourth District

Josie Gonzales
Vice Chair
Fifth District

Gary McBride
Chief Executive Officer

Inland Counties Emergency Medical Agency



Bed Delay Report

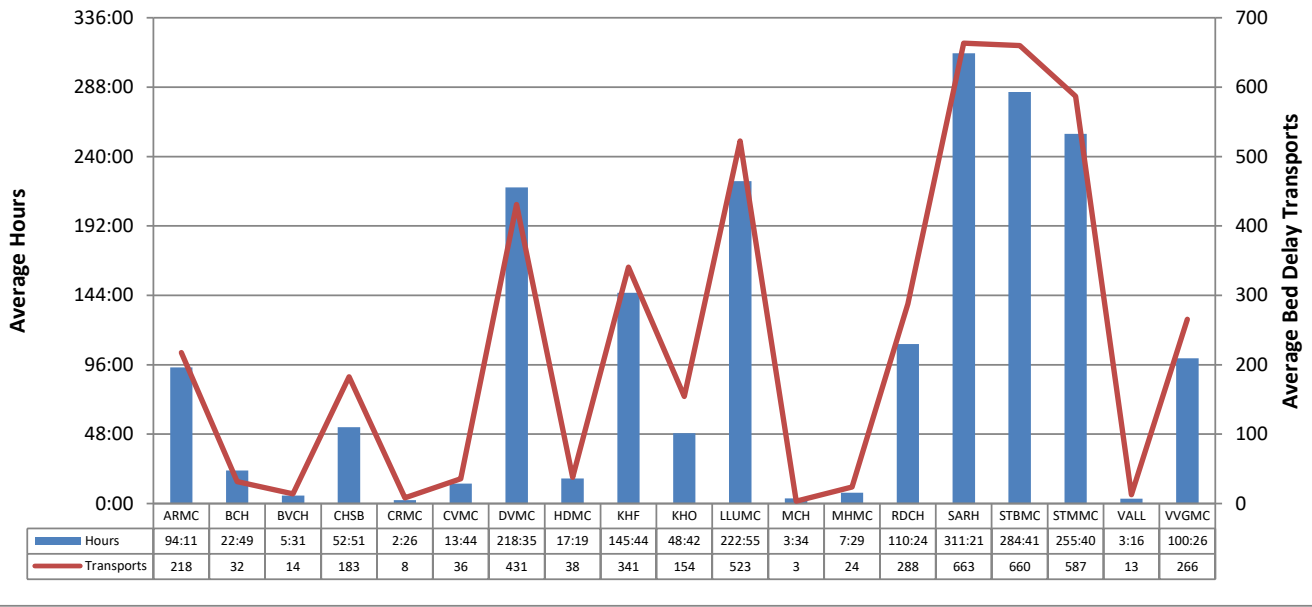
January 2020 – May 2020

Report Detail

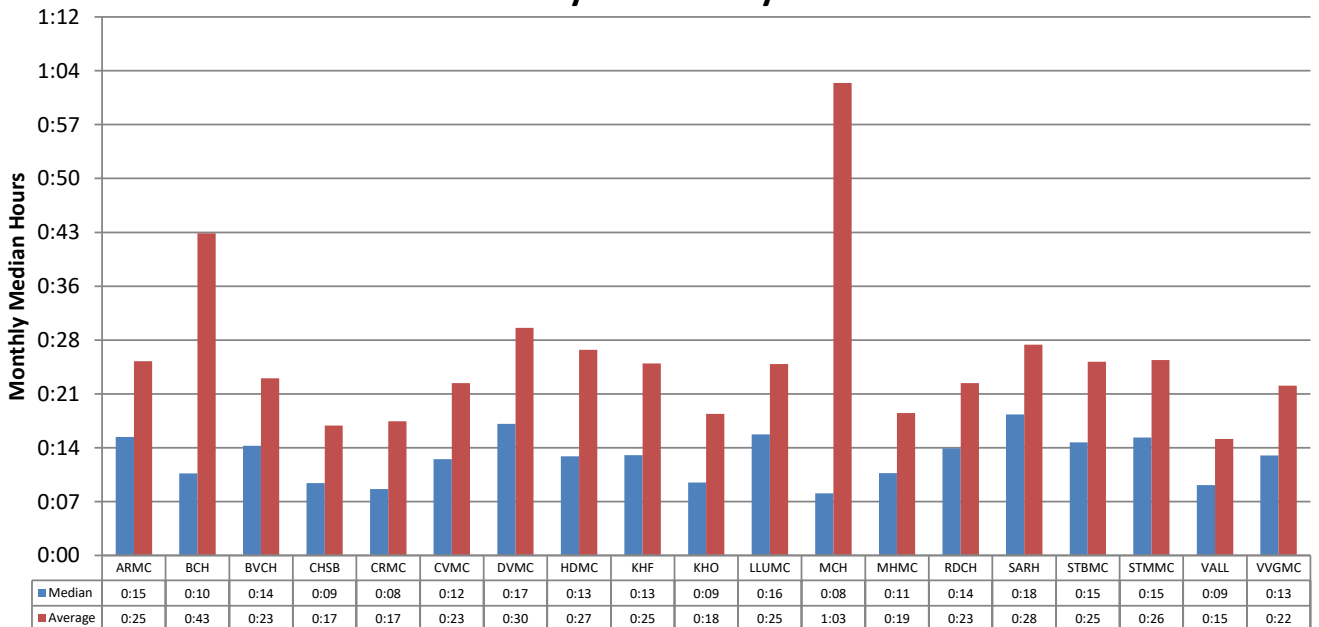
This report collects and summarizes the "Bed Delay" for a selected group of hospitals. "Bed Delay" is the time between arrival of an ambulance at a hospital and the ambulance going back in service. The first 25 minutes are excluded from consideration. The only type of transports that are considered are 911 calls where the patient is treated and transported via ambulance.

Abbreviated Name	Full Name
ARMC	Arrowhead Regional Medical Center
BCH	Barstow Community Hospital
BVCH	Bear Valley Community Hospital
CHSB	Community Hospital San Bernardino
CRMC	Colorado River Medical Center
CVMC	Chino Valley Medical Center
DVMC	Desert Valley Hospital Center
HDMC	Hi-Desert Medical Center
KHF	Kaiser Hospital Medical Center - Fontana
KHO	Kaiser Hospital Medical Center - Ontario
LLUMC	Loma Linda University Medical Center
MCH	Mountains Community Hospital
MHMC	Montclair Hospital Medical Center
RDCH	Redlands Community Hospital
SARH	San Antonio Regional Hospital
STBMC	St. Bernardine Medical Center
STMMC	St. Mary Medical Center
VALL	JLP VA Loma Linda
VVGMC	Victor Valley Global Medical Center

Bed Delay Hours* and Bed Delay Transports Average per Hospital by Month January 2020 – May 2020



Time Bed Delay Patients Were on Bed Delay per Patient Median and Average by Hospital January 2020 – May 2020



Beginning February 2017 ICEMA implemented the change from NEMSIS 2.2.1 data-set to NEMSIS 3.4.0 as required by the California Emergency Medical Services Agency (EMSA). This also required the change of the software being used to collect the EMS data. ICEMA uses the Signature Locked time as indicated by the paramedic and/or the Computer Aided Dispatch (CAD).

*Note: Bed Delay Hours excludes the first 25 minutes of each transport.

Total Bed Delay Hours* and Bed Delay Transports by Hospital January 2020 – May 2020

Hospital	Total Bed Delay Hours*	Bed Delay Transports	Total Transports	Bed Delay Percentage	Average Bed Delay by Patient	Median Bed Delay by Patient
ARMC	470:57	1,088	3,849	28.3%	0:25	0:15
BCH	114:08	159	2,093	7.6%	0:43	0:10
BVCH	27:38	70	669	10.5%	0:23	0:14
CHSB	264:15	913	2,614	34.9%	0:17	0:09
CRMC	12:14	41	348	11.8%	0:17	0:08
CVMC	68:41	179	1,606	11.1%	0:23	0:12
DVMC	1092:55	2,154	4,160	51.8%	0:30	0:17
HDMC	86:36	189	2,240	8.4%	0:27	0:13
KHF	728:40	1,704	5,286	32.2%	0:25	0:13
KHO	243:32	772	2,861	27.0%	0:18	0:09
LLUMC	1114:38	2,613	5,193	50.3%	0:25	0:16
MCH	17:54	17	310	5.5%	1:03	0:08
MHMC	37:25	118	1,082	10.9%	0:19	0:11
RDCH	552:01	1,438	3,604	39.9%	0:23	0:14
SARH	1556:49	3,317	6,554	50.6%	0:28	0:18
STBMC	1423:29	3,300	5,684	58.1%	0:25	0:15
STMMC	1278:20	2,934	5,060	58.0%	0:26	0:15
VALL	16:21	63	428	14.7%	0:15	0:09
VVGMC	502:13	1,328	3,180	41.8%	0:22	0:13
Total	9608:55	22,397	56,821	39.4%	0:25	0:15

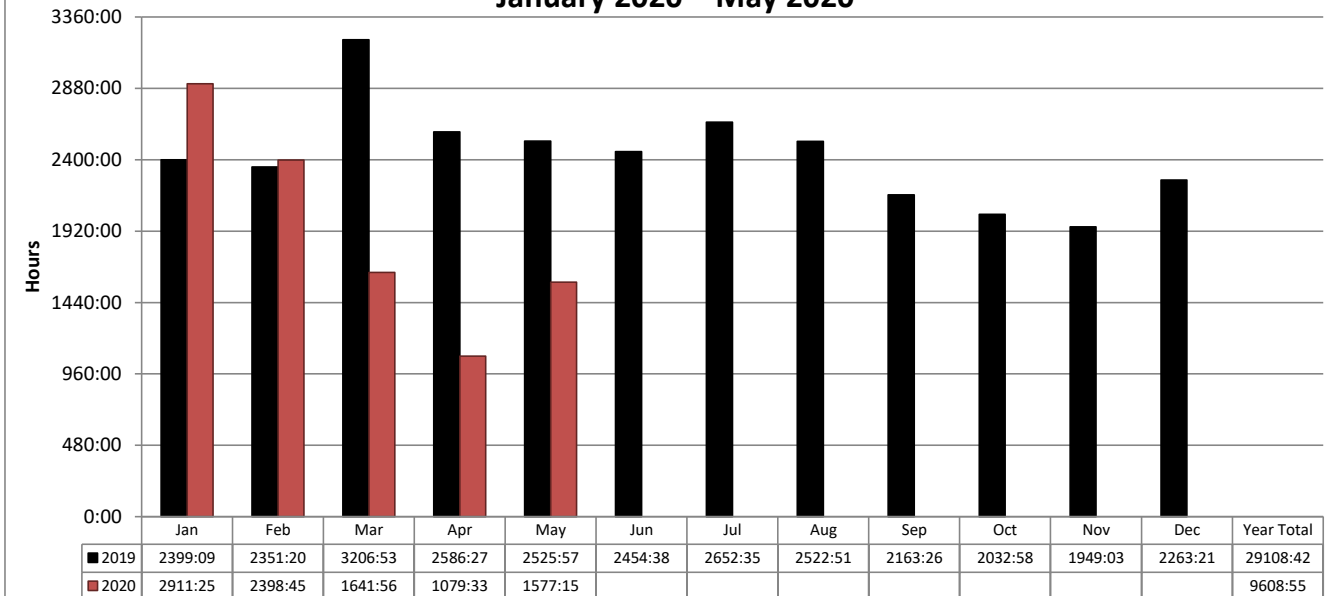
Beginning February 2017 ICEMA implemented the change from NEMSIS 2.2.1 data-set to NEMSIS 3.4.0 as required by the California Emergency Medical Services Agency (EMSA). This also required the change of the software being used to collect the EMS data. ICEMA uses the Signature Locked time as indicated by the paramedic and/or the Computer Aided Dispatch (CAD).

**Total Monthly Bed Delay Hours* by Hospital
January 2020 – May 2020**

Hospital	Jan	Feb	Mar	Apr	May	Jun	Jul	Aug	Sep	Oct	Nov	Dec	Total	Average Bed Delay by Month
ARMC	180:21	78:35	118:51	39:43	53:25								470:57	94:11
BCH	18:20	37:07	30:45	13:06	14:48								114:08	22:49
BVCH	12:19	6:16	2:28	0:10	6:22								27:38	5:31
CHSB	74:56	59:53	64:06	39:07	26:10								264:15	52:51
CRMC	1:19	3:55	2:12	0:51	3:54								12:14	2:26
CVMC	15:31	20:41	13:17	12:02	7:07								68:41	13:44
DVMC	373:00	297:23	201:04	89:55	131:31								1092:55	218:35
HDMC	26:03	20:45	13:34	5:17	20:55								86:36	17:19
KHF	269:19	217:38	120:29	58:15	62:58								728:40	145:44
KHO	82:08	63:28	34:36	23:16	40:02								243:32	48:42
LLUMC	337:00	338:01	230:22	70:33	138:40								1114:38	222:55
MCH	0:16	0:05	0:19	0:26	16:45								17:54	3:34
MHMC	9:26	5:51	6:49	5:20	9:57								37:25	7:29
RDCH	167:23	107:49	117:26	51:08	108:13								552:01	110:24
SARH	462:25	357:07	174:34	259:06	303:35								1556:49	311:21
STBMC	372:43	333:30	225:42	222:08	269:24								1423:29	284:41
STMMC	359:01	306:37	194:59	139:07	278:34								1278:20	255:40
VALL	8:08	3:06	1:55	2:11	0:59								16:21	3:16
VVGMC	141:35	140:49	88:19	47:42	83:46								502:13	100:26
Total	2911:25	2398:45	1641:56	1079:33	1577:15								9608:55	1921:47

Beginning February 2017 ICEMA implemented the change from NEMSIS 2.2.1 data-set to NEMSIS 3.4.0 as required by the California Emergency Medical Services Agency (EMSA). This also required the change of the software being used to collect the EMS data. ICEMA uses the Signature Locked time as indicated by the paramedic and/or the Computer Aided Dispatch (CAD).

**San Bernardino County
Total Bed Delay Hours* by Month
January 2020 – May 2020**



**Total Bed Delay Hours* and Bed Delay Transports by Hospital
January 2020 – May 2020**

Hospital	2019				2020 YTD			
	Total BD Hours*	BD Transports	Total Transports	BD %	Total BD Hours*	BD Transports	Total Transports	BD %
ARMC	1905	3,815	11,434	33.4%	470	1,088	3,849	28.3%
BCH	239	442	5,464	8.1%	114	159	2,093	7.6%
BVCH	48	119	1,885	6.3%	27	70	669	10.5%
CHSB	1031	2,963	7,290	40.6%	264	913	2,614	34.9%
CRMC	68	126	827	15.2%	12	41	348	11.8%
CVMC	209	619	4,777	13.0%	68	179	1,606	11.1%
DVMC	3287	6,165	11,355	54.3%	1092	2,154	4,160	51.8%
HDMC	173	421	5,648	7.5%	86	189	2,240	8.4%
KHF	2585	5,051	13,755	36.7%	728	1,704	5,286	32.2%
KHO	1174	2,649	7,755	34.2%	243	772	2,861	27.0%
LLUMC	3291	7,122	14,010	50.8%	1114	2,613	5,193	50.3%
MCH	21	37	908	4.1%	17	17	310	5.5%
MHMC	48	208	2,441	8.5%	37	118	1,082	10.9%
RDCH	2103	4,610	9,194	50.1%	552	1,438	3,604	39.9%
SARH	4250	7,981	17,381	45.9%	1556	3,317	6,554	50.6%
STBMC	3829	8,306	14,365	57.8%	1423	3,300	5,684	58.1%
STMMC	3460	7,471	12,737	58.7%	1278	2,934	5,060	58.0%
VALL	43	143	1,112	12.9%	16	63	428	14.7%
VVGMC	1335	3,781	8,223	46.0%	502	1,328	3,180	41.8%
Total	29108	62,029	150,561	41.2%	9608	22,397	56,821	39.4%

Beginning February 2017 ICEMA implemented the change from NEMSIS 2.2.1 data-set to NEMSIS 3.4.0 as required by the California Emergency Medical Services Agency (EMSA). This also required the change of the software being used to collect the EMS data. ICEMA uses the Signature Locked time as indicated by the paramedic and/or the Computer Aided Dispatch (CAD).

*Note: Bed Delay Hours excludes the first 25 minutes of each transport.

ICEMA, Elite Database and ePCR Database. Compiled 6/9/2020, PW.