



Inland Counties Emergency Medical Agency

1425 South D Street, San Bernardino, CA 92415-0060 ■ (909) 388-5823 ■ Fax (909) 388-5825 ■ www.icema.net

Serving San Bernardino, Inyo, and Mono Counties
Tom Lynch, EMS Administrator
Reza Vaezazizi, MD, Medical Director

DATE: February 17, 2021

TO: Hospital CEOs, ED Directors/Managers and PLNs - San Bernardino County

FROM: Tom Lynch
EMS Administrator

SUBJECT: HOSPITAL BED DELAY REPORT FOR JANUARY 2021

The Inland Counties EMS Agency (ICEMA) is providing the January 2021 hospital ambulance patient offload delay (APOD) report utilizing data retrieved from the ambulance provider computer aided dispatch records.

The APOD report provides the total number of:

- 9-1-1 transports to each hospital.
- Transports that resulted in APOD.
- APOD hours/minutes calculated beginning 25 minutes after the ambulance arrives at the hospital.

If you have any questions, please contact Mark Roberts, Technical Consultant, at (909) 388-5804 or via e-mail at mark.roberts@cao.sbcounty.gov.

TL/MR/jlm

c: Megan Barajas, Interim Regional Vice President, HASC
File Copy

BOARD OF DIRECTORS

Col. Paul Cook (Ret.)
First District

Janice Rutherford
Second District

Dawn Rowe
Vice Chair
Third District

Curt Hagman
Chairman
Fourth District

Joe Baca, Jr.
Fifth District

Leonard X. Hernandez
Chief Executive Officer

Inland Counties Emergency Medical Agency



Bed Delay Report

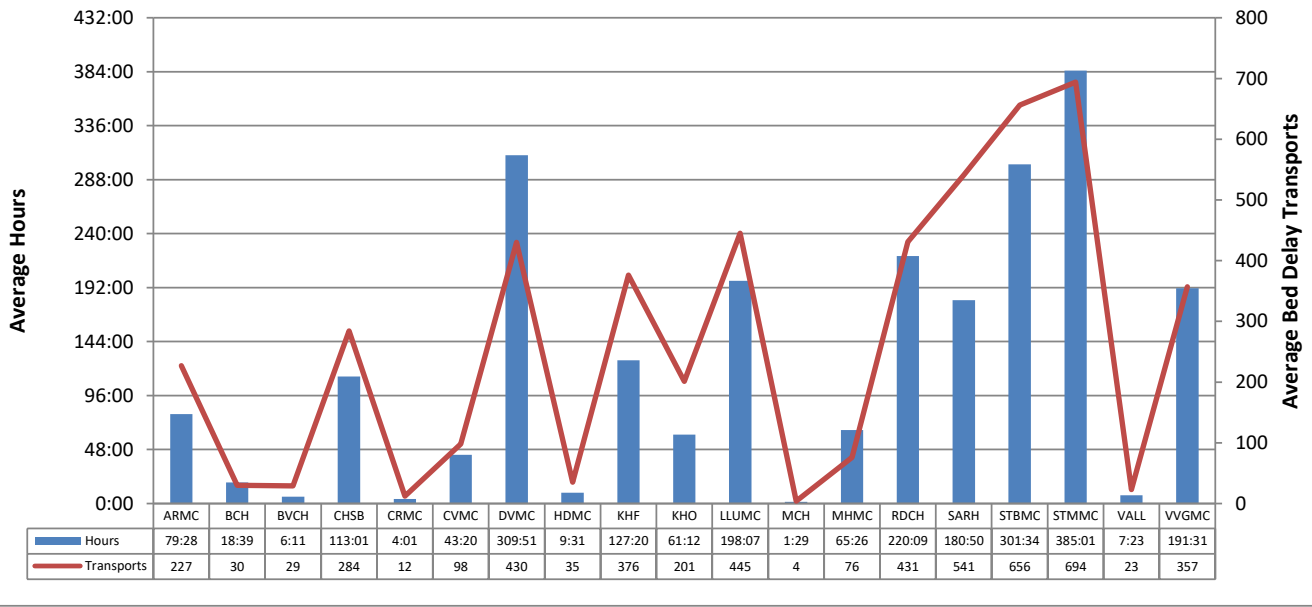
January 2021 – January 2021

Report Detail

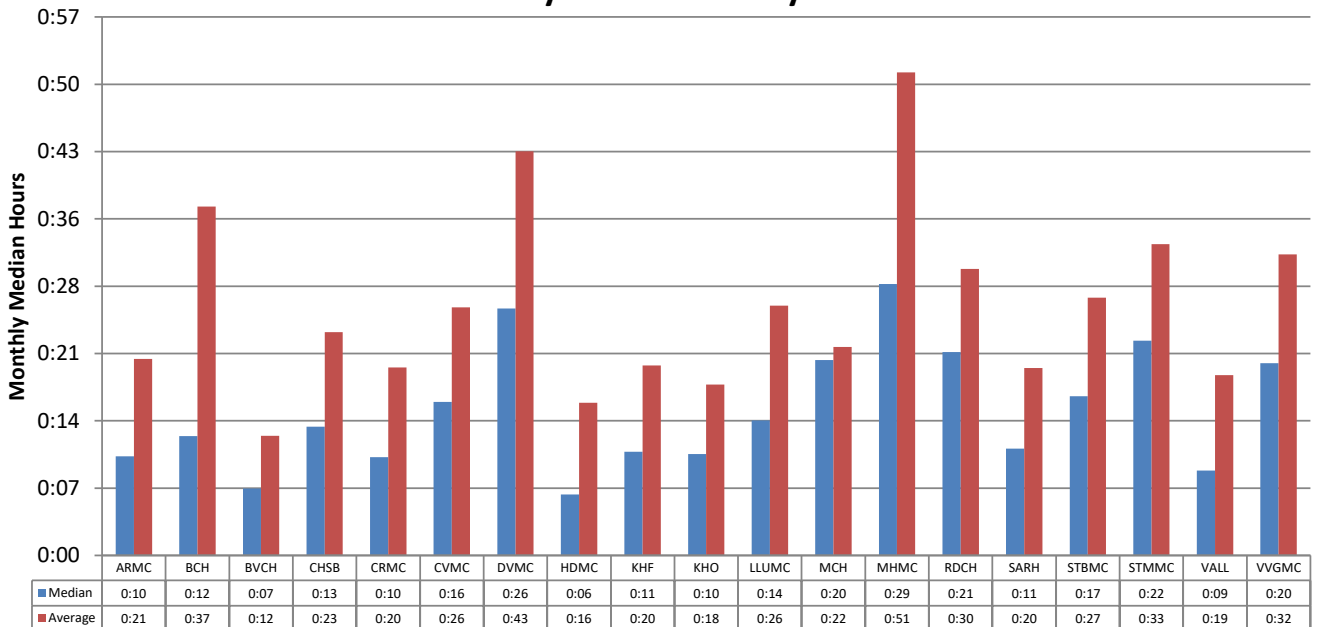
This report collects and summarizes the "Bed Delay" for a selected group of hospitals. "Bed Delay" is the time between arrival of an ambulance at a hospital and the ambulance going back in service. The first 25 minutes are excluded from consideration. The only type of transports that are considered are 911 calls where the patient is treated and transported via ambulance.

Abbreviated Name	Full Name
ARMC	Arrowhead Regional Medical Center
BCH	Barstow Community Hospital
BVCH	Bear Valley Community Hospital
CHSB	Community Hospital San Bernardino
CRMC	Colorado River Medical Center
CVMC	Chino Valley Medical Center
DVMC	Desert Valley Hospital Center
HDMC	Hi-Desert Medical Center
KHF	Kaiser Hospital Medical Center - Fontana
KHO	Kaiser Hospital Medical Center - Ontario
LLUMC	Loma Linda University Medical Center
MCH	Mountains Community Hospital
MHMC	Montclair Hospital Medical Center
RDCH	Redlands Community Hospital
SARH	San Antonio Regional Hospital
STBMC	St. Bernardine Medical Center
STMMC	St. Mary Medical Center
VALL	JLP VA Loma Linda
VVGMC	Victor Valley Global Medical Center

Bed Delay Hours* and Bed Delay Transports Average per Hospital by Month January 2021 – January 2021



Time Bed Delay Patients Were on Bed Delay per Patient Median and Average by Hospital January 2021 – January 2021



*Note: Bed Delay Hours excludes the first 25 minutes of each transport. ICEMA uses the Signature Locked time as indicated by the paramedic and/or the Computer Aided Dispatch (CAD).

Total Bed Delay Hours* and Bed Delay Transports by Hospital January 2021 – January 2021

Hospital	Total Bed Delay Hours*	Bed Delay Transports	Total Transports	Bed Delay Percentage	Average Bed Delay by Patient	Median Bed Delay by Patient
ARMC	79:28	227	874	26.0%	0:21	0:10
BCH	18:39	30	347	8.6%	0:37	0:12
BVCH	6:11	29	188	15.4%	0:12	0:07
CHSB	113:01	284	517	54.9%	0:23	0:13
CRMC	4:01	12	59	20.3%	0:20	0:10
CVMC	43:20	98	330	29.7%	0:26	0:16
DVMC	309:51	430	624	68.9%	0:43	0:26
HDMC	9:31	35	402	8.7%	0:16	0:06
KHF	127:20	376	1,133	33.2%	0:20	0:11
KHO	61:12	201	626	32.1%	0:18	0:10
LLUMC	198:07	445	1,160	38.4%	0:26	0:14
MCH	1:29	4	93	4.3%	0:22	0:20
MHMC	65:26	76	260	29.2%	0:51	0:29
RDCH	220:09	431	685	62.9%	0:30	0:21
SARH	180:50	541	1,257	43.0%	0:20	0:11
STBMC	301:34	656	1,054	62.2%	0:27	0:17
STMMC	385:01	694	909	76.3%	0:33	0:22
VALL	7:23	23	107	21.5%	0:19	0:09
VVGMC	191:31	357	604	59.1%	0:32	0:20
Total	2324:12	4,949	11,229	44.1%	0:28	0:16

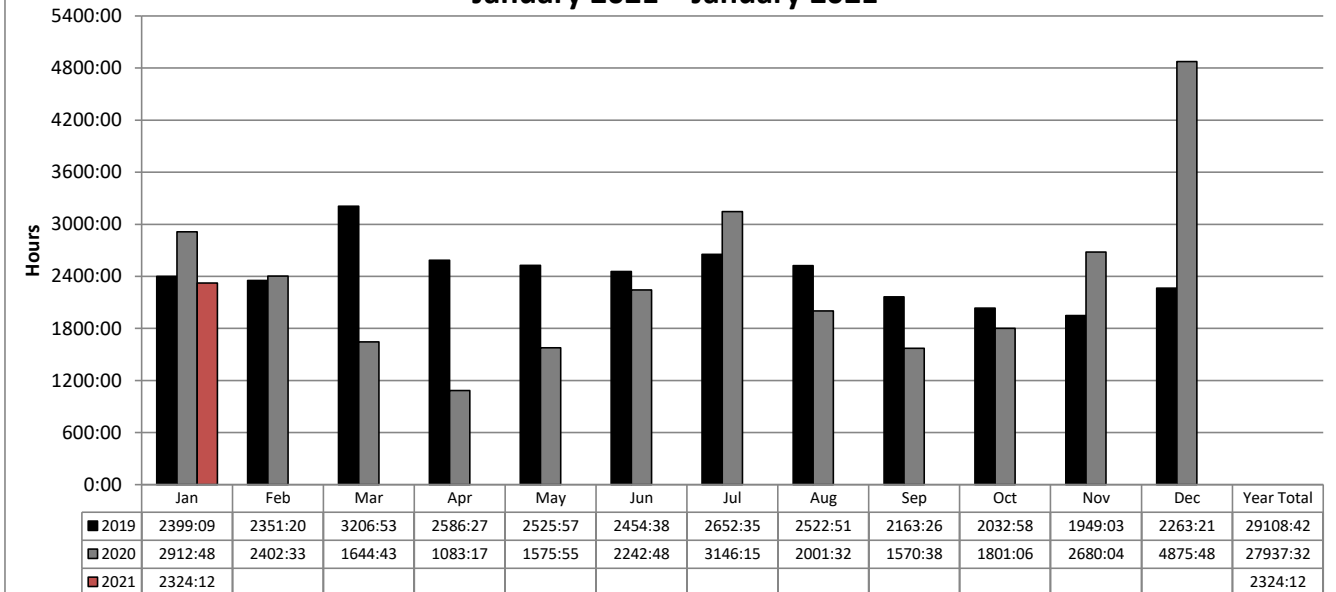
*Note: Bed Delay Hours excludes the first 25 minutes of each transport. ICEMA uses the Signature Locked time as indicated by the paramedic and/or the Computer Aided Dispatch (CAD).

**Total Monthly Bed Delay Hours* by Hospital
January 2021 – January 2021**

Hospital	Jan	Feb	Mar	Apr	May	Jun	Jul	Aug	Sep	Oct	Nov	Dec	Total	Average Bed Delay by Month
ARMC	79:28												79:28	79:28
BCH	18:39												18:39	18:39
BVCH	6:11												6:11	6:11
CHSB	113:01												113:01	113:01
CRMC	4:01												4:01	4:01
CVMC	43:20												43:20	43:20
DVMC	309:51												309:51	309:51
HDMC	9:31												9:31	9:31
KHF	127:20												127:20	127:20
KHO	61:12												61:12	61:12
LLUMC	198:07												198:07	198:07
MCH	1:29												1:29	1:29
MHMC	65:26												65:26	65:26
RDCH	220:09												220:09	220:09
SARH	180:50												180:50	180:50
STBMC	301:34												301:34	301:34
STMMC	385:01												385:01	385:01
VALL	7:23												7:23	7:23
VVGMC	191:31												191:31	191:31
Total	2324:12												2324:12	2324:12

*Note: Bed Delay Hours excludes the first 25 minutes of each transport. ICEMA uses the Signature Locked time as indicated by the paramedic and/or the Computer Aided Dispatch (CAD).

**San Bernardino County
Total Bed Delay Hours* by Month
January 2021 – January 2021**



**Total Bed Delay Hours* and Bed Delay Transports by Hospital
January 2021 – January 2021**

Hospital	2019				2020				2021 YTD			
	Total BD Hours*	BD Transports	Total Transports	BD %	Total BD Hours*	BD Transports	Total Transports	BD %	Total BD Hours*	BD Transports	Total Transports	BD %
ARMC	1905	3,815	11,434	33.4%	1338	2,933	10,087	29.1%	79	227	874	26.0%
BCH	239	442	5,464	8.1%	315	461	4,842	9.5%	18	30	347	8.6%
BVCH	48	119	1,885	6.3%	68	162	1,631	9.9%	6	29	188	15.4%
CHSB	1031	2,963	7,290	40.6%	927	2,566	6,612	38.8%	113	284	517	54.9%
CRMC	68	126	827	15.2%	33	108	751	14.4%	4	12	59	20.3%
CVMC	209	619	4,777	13.0%	279	638	4,338	14.7%	43	98	330	29.7%
DVMC	3287	6,165	11,355	54.3%	3501	5,662	10,014	56.5%	309	430	624	68.9%
HDMC	173	421	5,648	7.5%	150	343	5,030	6.8%	9	35	402	8.7%
KHF	2585	5,051	13,755	36.7%	2420	5,088	13,508	37.7%	127	376	1,133	33.2%
KHO	1174	2,649	7,755	34.2%	988	2,463	7,340	33.6%	61	201	626	32.1%
LLUMC	3291	7,122	14,010	50.8%	2784	6,041	13,208	45.7%	198	445	1,160	38.4%
MCH	21	37	908	4.1%	35	48	800	6.0%	1	4	93	4.3%
MHMC	48	208	2,441	8.5%	126	311	2,602	12.0%	65	76	260	29.2%
RDCH	2103	4,610	9,194	50.1%	2195	4,291	8,741	49.1%	220	431	685	62.9%
SARH	4250	7,981	17,381	45.9%	3178	7,691	16,369	47.0%	180	541	1,257	43.0%
STBMC	3829	8,306	14,365	57.8%	3672	8,329	14,066	59.2%	301	656	1,054	62.2%
STMMC	3460	7,471	12,737	58.7%	4210	8,115	12,366	65.6%	385	694	909	76.3%
VALL	43	143	1,112	12.9%	52	182	1,116	16.3%	7	23	107	21.5%
VVGMC	1335	3,781	8,223	46.0%	1657	3,675	8,473	43.4%	191	357	604	59.1%
Total	29108	62,029	150,561	41.2%	27937	59,107	141,894	41.7%	2324	4,949	11,229	44.1%

*Note: Bed Delay Hours excludes the first 25 minutes of each transport. ICEMA uses the Signature Locked time as indicated by the paramedic and/or the Computer Aided Dispatch (CAD).