



Inland Counties Emergency Medical Agency

1425 South D Street, San Bernardino, CA 92415-0060 ■ (909) 388-5823 ■ Fax (909) 388-5825 ■ www.icema.net

Serving San Bernardino, Inyo, and Mono Counties
Daniel Munoz, Interim EMS Administrator
Reza Vaezazizi, MD, Medical Director

DATE: May 31, 2022

TO: Hospital CEOs, ED Directors/Managers and PLNs - San Bernardino County

FROM: Daniel Munoz
Interim EMS Administrator

SUBJECT: HOSPITAL BED DELAY REPORT FOR JANUARY – APRIL 2022

The Inland Counties EMS Agency (ICEMA) is providing the January through April 2022, hospital ambulance patient offload delay (APOD) report utilizing data retrieved from the ambulance provider computer aided dispatch records.

The APOD report provides the total number of:

- 9-1-1 transports to each hospital.
- Transports that resulted in APOD.
- APOD hours/minutes calculated beginning 25 minutes after the ambulance arrives at the hospital.

If you have any questions, please contact Mark Roberts, Technical Consultant, at (909) 388-5804 or via e-mail at mark.roberts@cao.sbcounty.gov.

DM/MR/mae

c: Megan Barajas, Regional Vice President, HASC
File Copy

BOARD OF DIRECTORS

Col. Paul Cook (Ret.)
First District

Janice Rutherford
Second District

Dawn Rowe
Vice Chair
Third District

Curt Hagman
Chairman
Fourth District

Joe Baca, Jr.
Fifth District

Leonard X. Hernandez
Chief Executive Officer

Inland Counties Emergency Medical Agency



Bed Delay Report

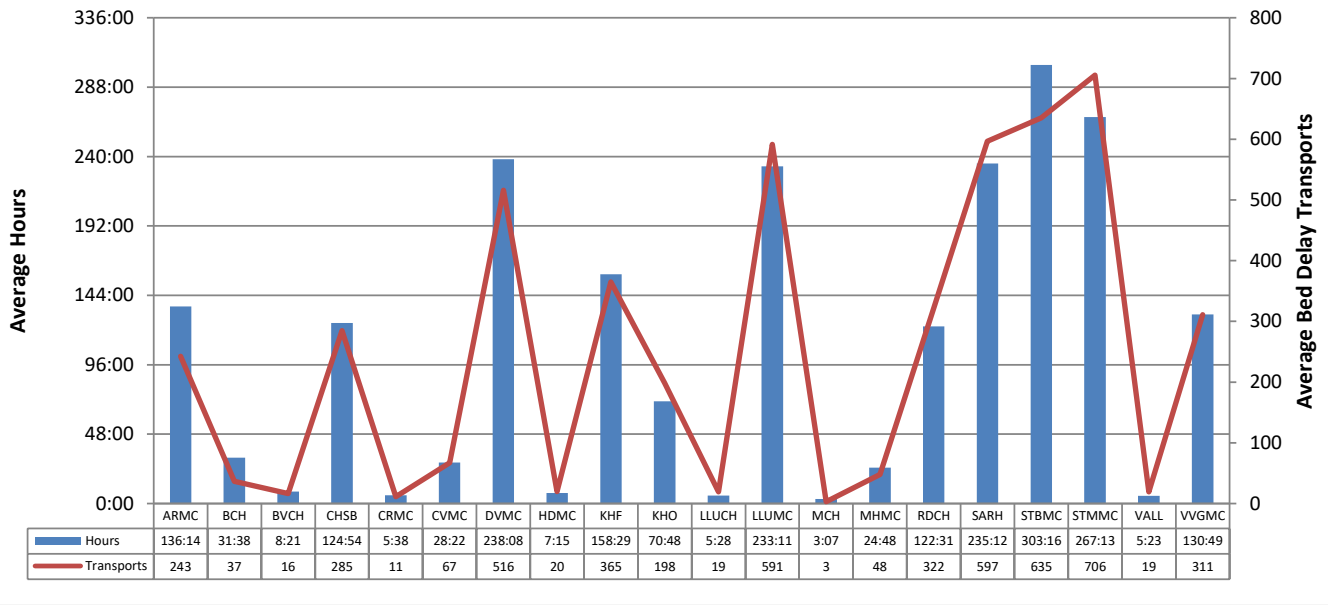
January 2022 – April 2022

Report Detail

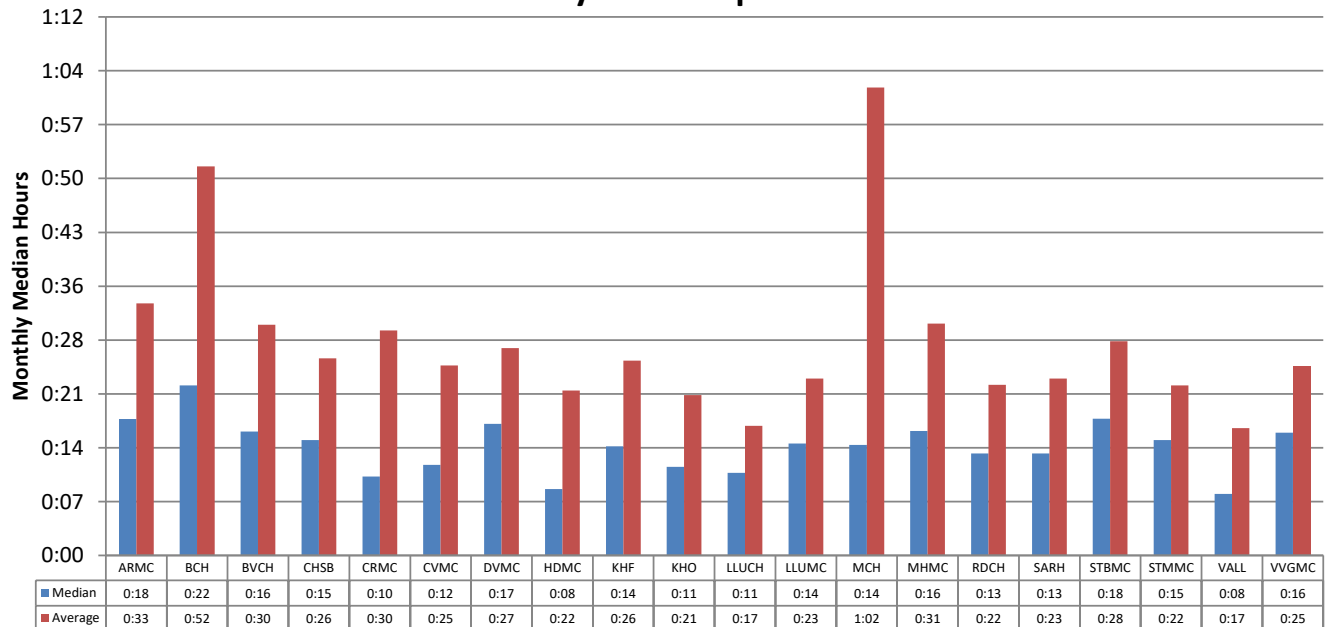
This report collects and summarizes the "Bed Delay" for a selected group of hospitals. "Bed Delay" is the time between when the transfer of care takes place and the signature lock time is completed. The first 25 minutes are excluded from consideration. The only type of transports that are considered are 911 calls where the patient is treated and transported via ambulance. Please note that only ICEMA providers are included in this analysis.

Abbreviated Name	Full Name
ARMC	Arrowhead Regional Medical Center
BCH	Barstow Community Hospital
BVCH	Bear Valley Community Hospital
CHSB	Community Hospital San Bernardino
CRMC	Colorado River Medical Center
CVMC	Chino Valley Medical Center
DVMC	Desert Valley Hospital Center
HDMC	Hi-Desert Medical Center
KHF	Kaiser Hospital Medical Center - Fontana
KHO	Kaiser Hospital Medical Center - Ontario
LLUCH	Loma Linda University Children's Hospital
LLUMC	Loma Linda University Medical Center
MCH	Mountains Community Hospital
MHMC	Montclair Hospital Medical Center
RDCH	Redlands Community Hospital
SARH	San Antonio Regional Hospital
STBMC	St. Bernardine Medical Center
STMMC	St. Mary Medical Center
VALL	JLP VA Loma Linda
VVGMC	Victor Valley Global Medical Center

Bed Delay Hours* and Bed Delay Transports Average per Hospital for an Average Month Period January 2022 – April 2022



Time Bed Delay Patients Were on Bed Delay per Patient Median and Average by Hospital January 2022 – April 2022



*Note: Bed Delay Hours excludes the first 25 minutes of each transport. ICEMA uses the time from transfer of care to when the signature lock time is completed. Only ICEMA providers are included in this analysis.

Total Bed Delay Hours* and Bed Delay Transports by Hospital January 2022 – April 2022

Hospital	Total Bed Delay Hours*	Bed Delay Transports	Total Transports	Bed Delay Percentage	Average Bed Delay by Patient	Median Bed Delay by Patient
ARMC	544:59	970	3,535	27.4%	0:33	0:18
BCH	126:32	146	1,509	9.7%	0:52	0:22
BVCH	33:24	65	726	9.0%	0:30	0:16
CHSB	499:39	1,138	2,163	52.6%	0:26	0:15
CRMC	22:33	45	250	18.0%	0:30	0:10
CVMC	113:29	268	1,088	24.6%	0:25	0:12
DVMC	952:32	2,063	3,374	61.1%	0:27	0:17
HDMC	29:01	79	1,687	4.7%	0:22	0:08
KHF	633:58	1,460	4,482	32.6%	0:26	0:14
KHO	283:14	793	2,550	31.1%	0:21	0:11
LLUCH	21:55	76	306	24.8%	0:17	0:11
LLUMC	932:45	2,365	4,573	51.7%	0:23	0:14
MCH	12:30	12	320	3.8%	1:02	0:14
MHMC	99:13	192	756	25.4%	0:31	0:16
RDCH	490:04	1,289	3,023	42.6%	0:22	0:13
SARH	940:49	2,387	5,435	43.9%	0:23	0:13
STBMC	1213:05	2,541	4,101	62.0%	0:28	0:18
STMMC	1068:54	2,822	4,236	66.6%	0:22	0:15
VALL	21:32	76	357	21.3%	0:17	0:08
VVGMC	523:16	1,243	2,462	50.5%	0:25	0:16
Total	8563:32	20,030	46,933	42.7%	0:25	0:15

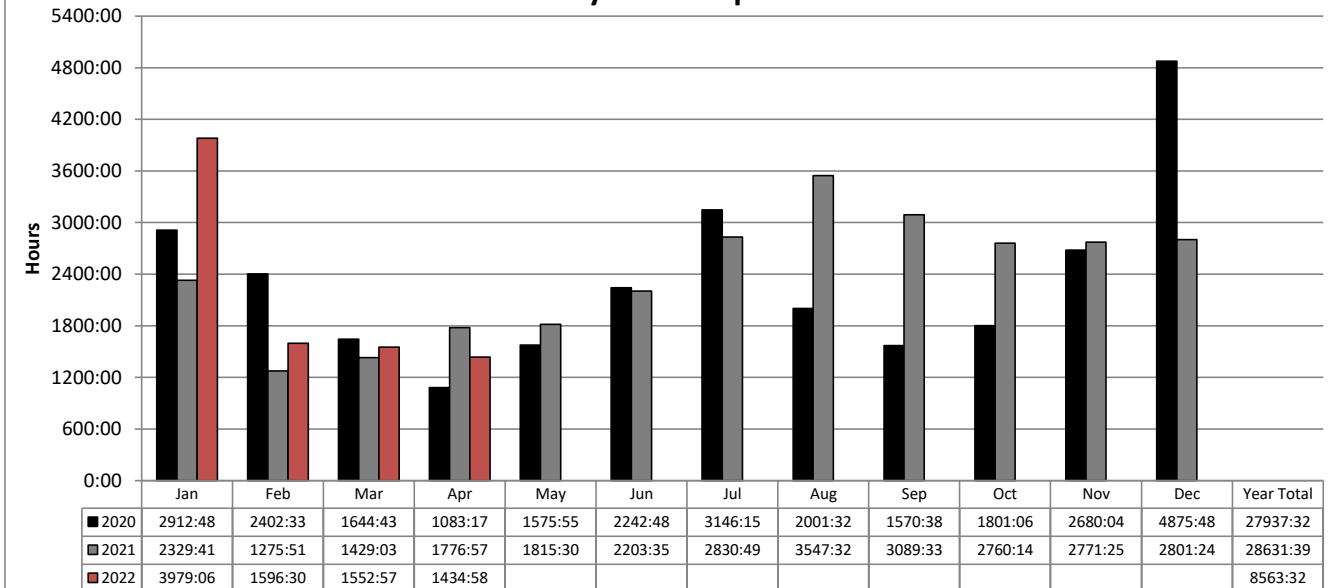
*Note: Bed Delay Hours excludes the first 25 minutes of each transport. ICEMA uses the time from transfer of care to when the signature lock time is completed. Only ICEMA providers are included in this analysis.

**Total Monthly Bed Delay Hours* by Hospital
January 2022 – April 2022**

Hospital	Jan	Feb	Mar	Apr	May	Jun	Jul	Aug	Sep	Oct	Nov	Dec	Total	Average Bed Delay by Month
ARMC	272:19	124:06	85:54	62:39									544:59	136:14
BCH	15:50	25:02	32:15	53:22									126:32	31:38
BVCH	15:58	10:51	4:33	2:00									33:24	8:21
CHSB	259:02	65:17	73:48	101:31									499:39	124:54
CRMC	4:47	4:38	6:34	6:32									22:33	5:38
CVMC	85:50	5:47	13:36	8:14									113:29	28:22
DVMC	415:35	178:25	191:52	166:38									952:32	238:08
HDMC	17:51	4:46	2:35	3:48									29:01	7:15
KHF	333:44	101:13	87:11	111:49									633:58	158:29
KHO	151:40	31:18	53:51	46:23									283:14	70:48
LLUCH	5:20	1:46	5:18	9:29									21:55	5:28
LLUMC	400:42	235:43	146:57	149:22									932:45	233:11
MCH	2:14	6:43	3:33										12:30	3:07
MHMC	80:04	9:14	8:06	1:47									99:13	24:48
RDCH	284:56	80:45	71:55	52:26									490:04	122:31
SARH	430:05	181:51	247:15	81:36									940:49	235:12
STBMC	467:03	209:57	243:12	292:52									1213:05	303:16
STMMC	417:35	220:19	208:39	222:20									1068:54	267:13
VALL	8:54	1:15	2:50	8:31									21:32	5:23
VVGMC	309:29	97:25	62:53	53:27									523:16	130:49
Total	3979:06	1596:30	1552:57	1434:58									8563:32	2140:53

*Note: Bed Delay Hours excludes the first 25 minutes of each transport. ICEMA uses the time from transfer of care to when the signature lock time is completed. Only ICEMA providers are included in this analysis.

**San Bernardino County
Total Bed Delay Hours* by Month
January 2022 – April 2022**



**Total Bed Delay Hours* and Bed Delay Transports by Hospital
January 2022 – April 2022**

Hospital	2020				2021				2022 YTD			
	Total BD Hours*	BD Transports	Total Transports	BD %	Total BD Hours*	BD Transports	Total Transports	BD %	Total BD Hours*	BD Transports	Total Transports	BD %
ARMC	1338	2,933	10,087	29.1%	941	2,322	10,765	21.6%	544	970	3,535	27.4%
BCH	315	461	4,842	9.5%	215	421	4,598	9.2%	126	146	1,509	9.7%
BVCH	68	162	1,631	9.9%	31	96	1,766	5.4%	33	65	726	9.0%
CHSB	927	2,566	6,612	38.8%	1119	3,009	6,339	47.5%	499	1,138	2,163	52.6%
CRMC	33	108	751	14.4%	58	129	733	17.6%	22	45	250	18.0%
CVMC	279	638	4,338	14.7%	143	444	2,885	15.4%	113	268	1,088	24.6%
DVMC	3501	5,662	10,014	56.5%	3799	6,335	9,857	64.3%	952	2,063	3,374	61.1%
HDMC	150	343	5,030	6.8%	83	208	5,163	4.0%	29	79	1,687	4.7%
KHF	2420	5,088	13,508	37.7%	1650	4,243	13,412	31.6%	633	1,460	4,482	32.6%
KHO	988	2,463	7,340	33.6%	650	2,071	6,949	29.8%	283	793	2,550	31.1%
LLUCH					14	32	101	31.7%	21	76	306	24.8%
LLUMC	2784	6,041	13,208	45.7%	2958	6,296	13,855	45.4%	932	2,365	4,573	51.7%
MCH	35	48	800	6.0%	27	31	914	3.4%	12	12	320	3.8%
MHMC	126	311	2,602	12.0%	150	304	2,365	12.9%	99	192	756	25.4%
RDCH	2195	4,291	8,741	49.1%	1914	4,464	8,930	50.0%	490	1,289	3,023	42.6%
SARH	3178	7,691	16,369	47.0%	2011	6,502	17,040	38.2%	940	2,387	5,435	43.9%
STBMC	3672	8,329	14,066	59.2%	4619	8,380	12,551	66.8%	1213	2,541	4,101	62.0%
STMMC	4210	8,115	12,366	65.6%	5576	9,272	12,249	75.7%	1068	2,822	4,236	66.6%
VALL	52	182	1,116	16.3%	33	133	1,079	12.3%	21	76	357	21.3%
VVGMC	1657	3,675	8,473	43.4%	2630	5,034	8,070	62.4%	523	1,243	2,462	50.5%
Total	27937	59,107	141,894	41.7%	28631	59,726	139,621	42.8%	8563	20,030	46,933	42.7%

*Note: Bed Delay Hours excludes the first 25 minutes of each transport. ICEMA uses the time from transfer of care to when the signature lock time is completed. Only ICEMA providers are included in this analysis.