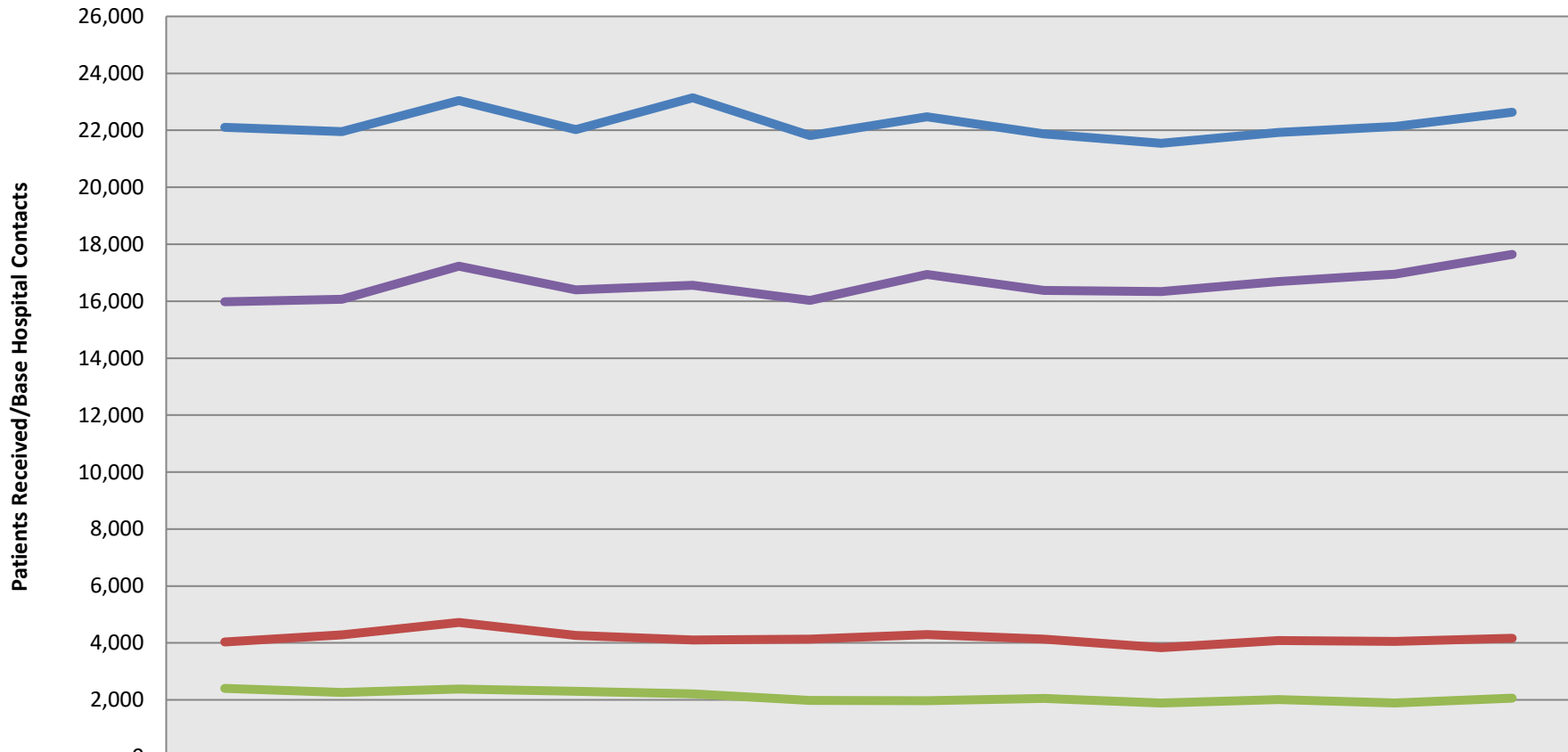
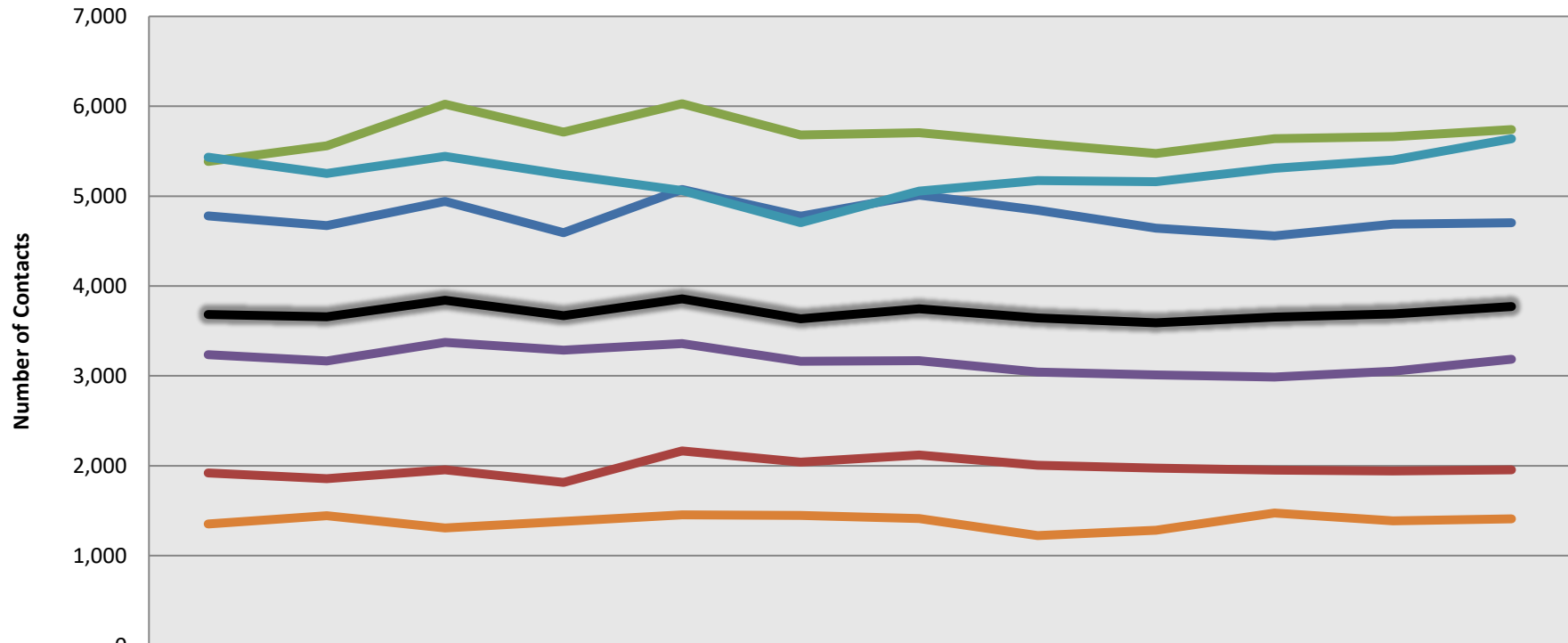


## San Bernardino County Base Hospital Statistics 2015 - 2017 By Quarter



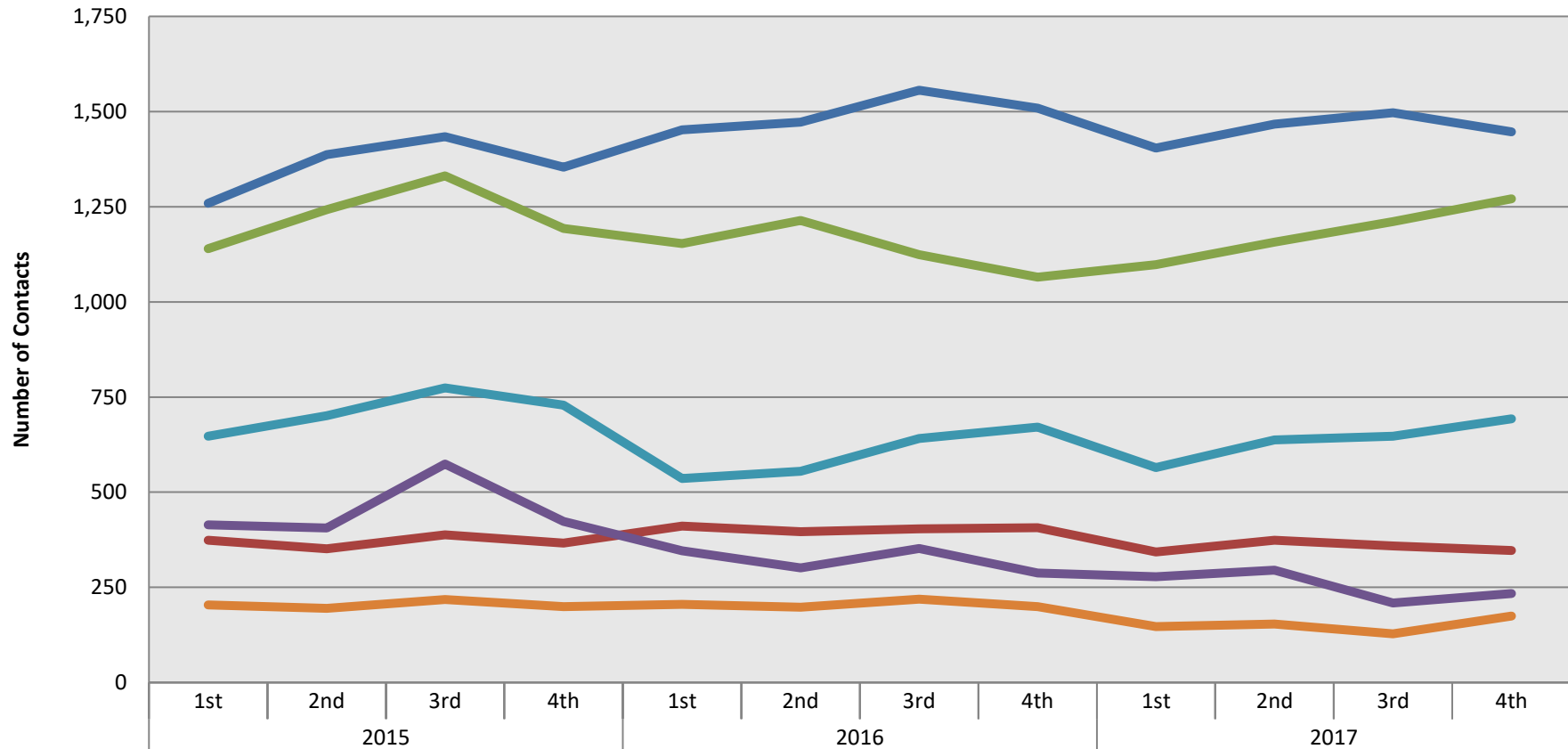
	1st	2nd	3rd	4th	1st	2nd	3rd	4th	1st	2nd	3rd	4th
	2015				2016				2017			
Contacts	22,106	21,953	23,044	22,026	23,142	21,813	22,474	21,873	21,544	21,921	22,134	22,634
Trauma	4,038	4,282	4,719	4,264	4,103	4,136	4,296	4,139	3,835	4,084	4,051	4,167
Peds	2,405	2,259	2,383	2,304	2,209	1,984	1,973	2,051	1,890	2,008	1,891	2,060
Received	15,980	16,066	17,227	16,394	16,562	16,025	16,936	16,383	16,341	16,689	16,944	17,644

## San Bernardino County Base Hospital Contacts By Hospital 2015 - 2017 By Quarter



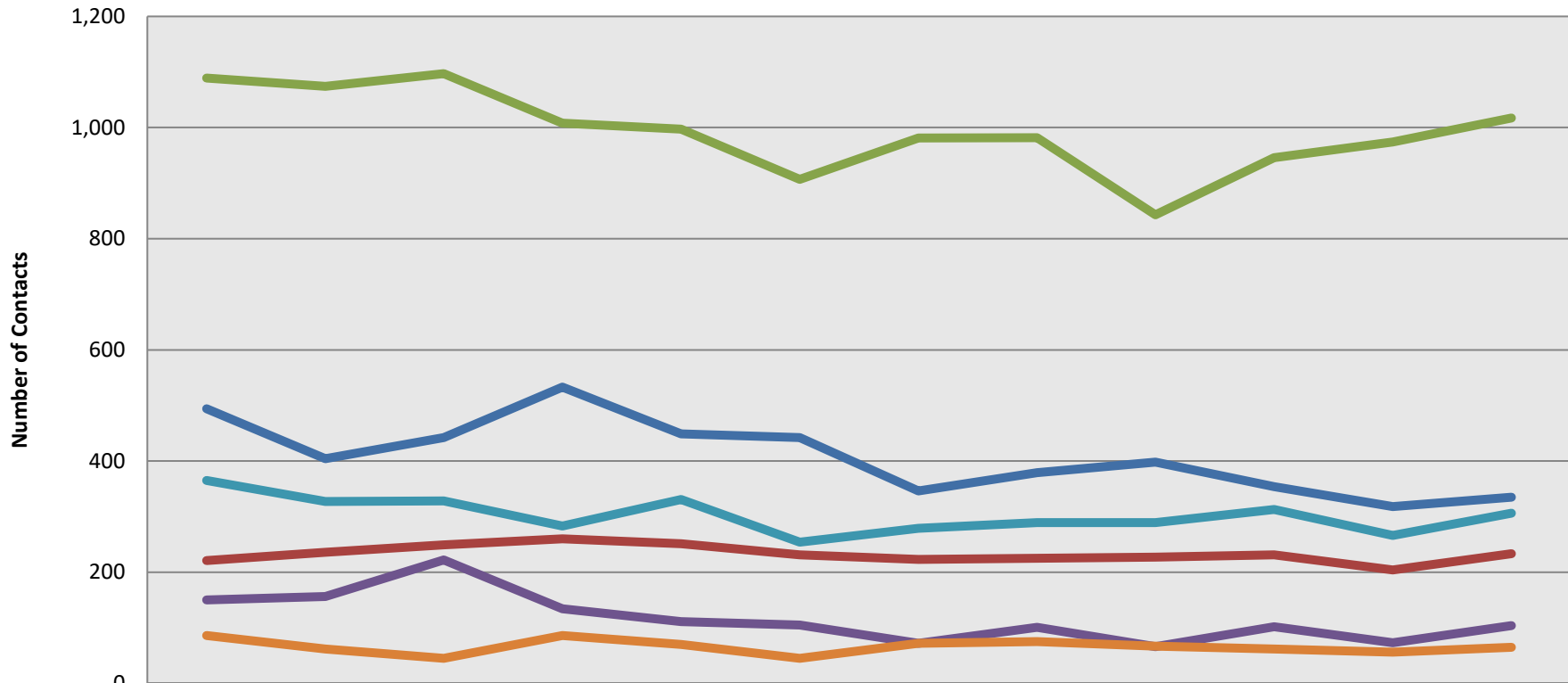
	1st	2nd	3rd	4th	1st	2nd	3rd	4th	1st	2nd	3rd	4th
	2015				2016				2017			
ARMC	4,780	4,673	4,941	4,593	5,074	4,777	5,011	4,844	4,645	4,558	4,688	4,705
CVMC	1,920	1,858	1,954	1,815	2,165	2,041	2,121	2,004	1,973	1,951	1,942	1,954
LLUMC	5,386	5,561	6,024	5,712	6,028	5,681	5,706	5,586	5,475	5,640	5,663	5,741
RDCH	3,237	3,165	3,373	3,286	3,360	3,163	3,169	3,043	3,010	2,987	3,052	3,186
SARH	5,432	5,253	5,443	5,240	5,061	4,705	5,056	5,173	5,159	5,311	5,402	5,638
HDMC	1,351	1,443	1,309	1,380	1,454	1,446	1,411	1,223	1,282	1,474	1,387	1,410
Ave	3,684	3,659	3,841	3,671	3,857	3,636	3,746	3,646	3,591	3,654	3,689	3,772

## San Bernardino County Trauma Patients Base Hospital Contacts By Hospital 2015 - 2017 By Quarter



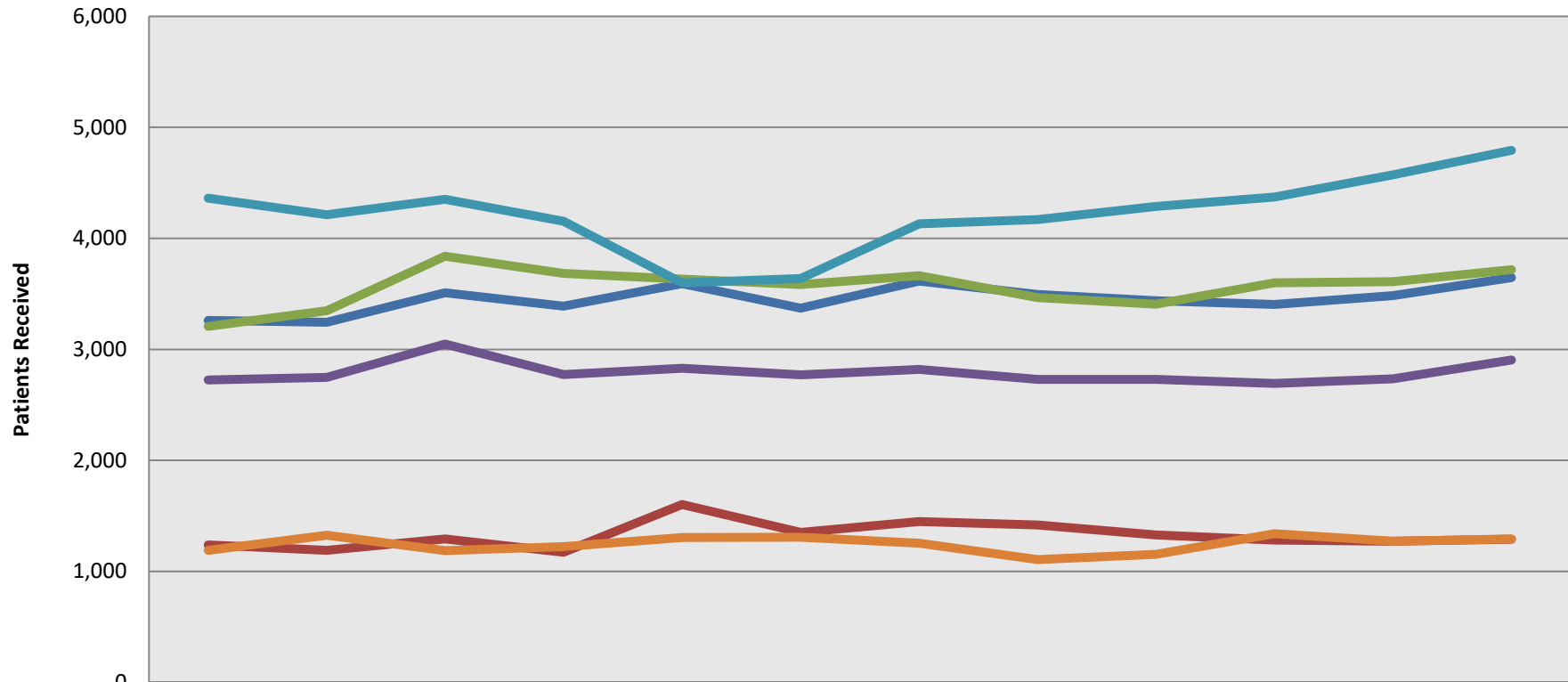
ARMC	1,259	1,387	1,434	1,354	1,452	1,472	1,556	1,509	1,404	1,467	1,497	1,447
CVMC	374	351	388	366	411	396	404	407	343	374	359	347
LLUMC	1,140	1,242	1,331	1,193	1,153	1,214	1,124	1,065	1,098	1,157	1,211	1,271
RDCH	414	406	574	423	346	301	352	288	278	295	209	234
SARH	647	701	774	729	536	555	641	671	565	637	647	693
HDMC	204	195	218	199	205	198	219	199	147	154	128	175

## San Bernardino County Pediatric Patients Base Hospital Contacts By Hospital 2015 - 2017 By Quarter



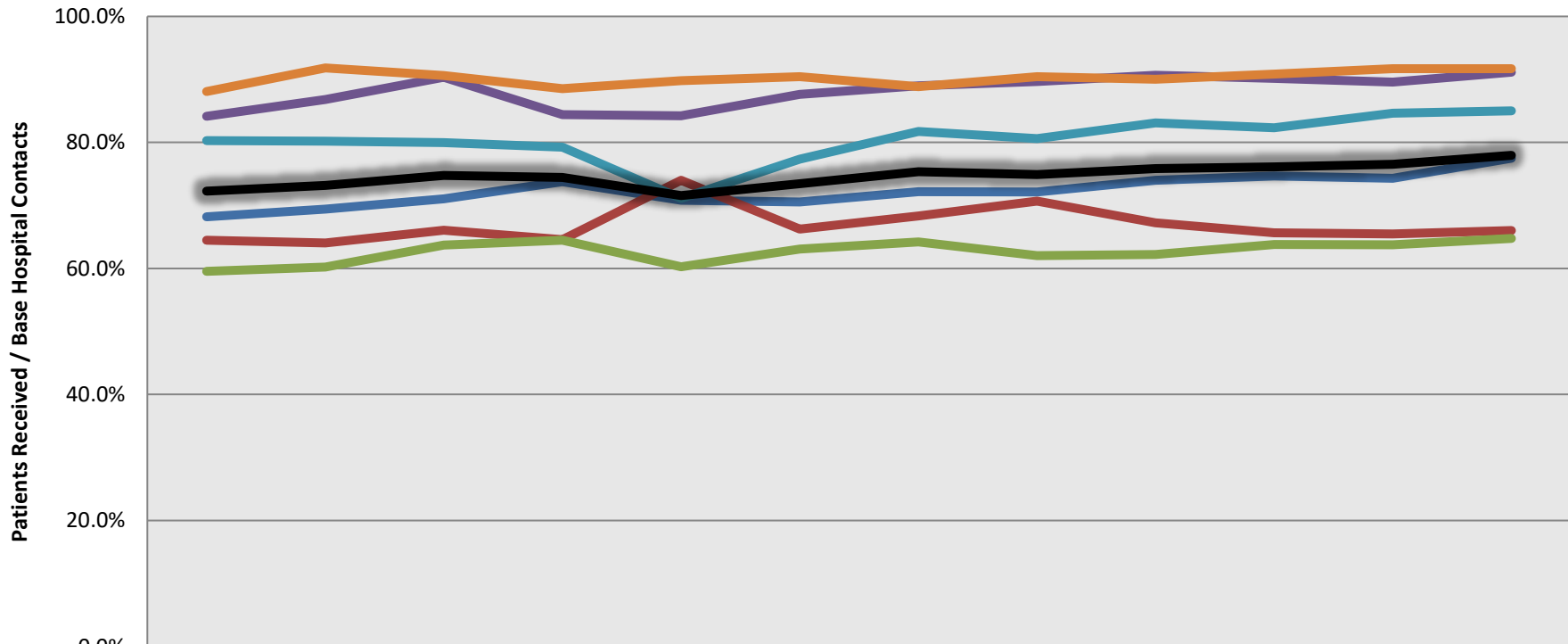
	1st	2nd	3rd	4th	1st	2nd	3rd	4th	1st	2nd	3rd	4th
	2015				2016				2017			
— ARMC	494	404	442	533	449	442	346	379	398	354	318	335
— CVMC	221	236	249	260	251	231	223	225	227	231	204	233
— LLUMC	1,089	1,074	1,097	1,008	997	907	981	982	843	946	974	1,017
— RDCH	150	156	222	134	111	105	72	101	66	102	73	104
— SARH	365	327	328	283	331	254	279	289	289	313	266	306
— HDMC	86	62	45	86	70	45	72	75	67	62	56	65

## San Bernardino County Patients Received Where Base Hospital is Also the Receiving Hospital 2015 - 2017 By Quarter



	1st	2nd	3rd	4th	1st	2nd	3rd	4th	1st	2nd	3rd	4th
	2015				2016				2017			
ARMC	3,260	3,244	3,511	3,389	3,593	3,371	3,616	3,495	3,438	3,404	3,483	3,646
CVMC	1,238	1,190	1,291	1,172	1,602	1,352	1,449	1,417	1,327	1,281	1,272	1,290
LLUMC	3,207	3,348	3,839	3,684	3,632	3,584	3,665	3,466	3,406	3,599	3,611	3,718
RDCH	2,724	2,747	3,048	2,774	2,830	2,771	2,820	2,729	2,729	2,693	2,734	2,904
SARH	4,361	4,212	4,352	4,153	3,599	3,639	4,132	4,170	4,287	4,373	4,572	4,793
HDMC	1,190	1,325	1,186	1,222	1,306	1,308	1,254	1,106	1,154	1,339	1,272	1,293

## San Bernardino County Percent of Patients Where Base Hospital is Also the Receiving Hospital 2015 - 2017 By Quarter



	1st	2nd	3rd	4th	1st	2nd	3rd	4th	1st	2nd	3rd	4th
	2015				2016				2017			
ARMC	68%	69%	71%	74%	71%	71%	72%	72%	74%	75%	74%	77%
CVMC	64%	64%	66%	65%	74%	66%	68%	71%	67%	66%	65%	66%
LLUMC	60%	60%	64%	64%	60%	63%	64%	62%	62%	64%	64%	65%
RDCH	84%	87%	90%	84%	84%	88%	89%	90%	91%	90%	90%	91%
SARH	80%	80%	80%	79%	71%	77%	82%	81%	83%	82%	85%	85%
HDMC	88%	92%	91%	89%	90%	90%	89%	90%	90%	91%	92%	92%
All	72%	73%	75%	74%	72%	73%	75%	75%	76%	76%	77%	78%